

# Brugervejledning

---

*Ring op til Internet -SDNMail*



**Computer Sciences Corporation**

## Indholdsfortegnelse

Dialup til Internet.....	3
Opkaldsprofil til Internet med TDC Netbasis.....	3

## Dialup til Internet

Hvis du hører til dem der kommer på Internet v.h.a. et almindeligt telefonmodem opkoblet til CSC, skal du fra 1.januar skifte din konto.

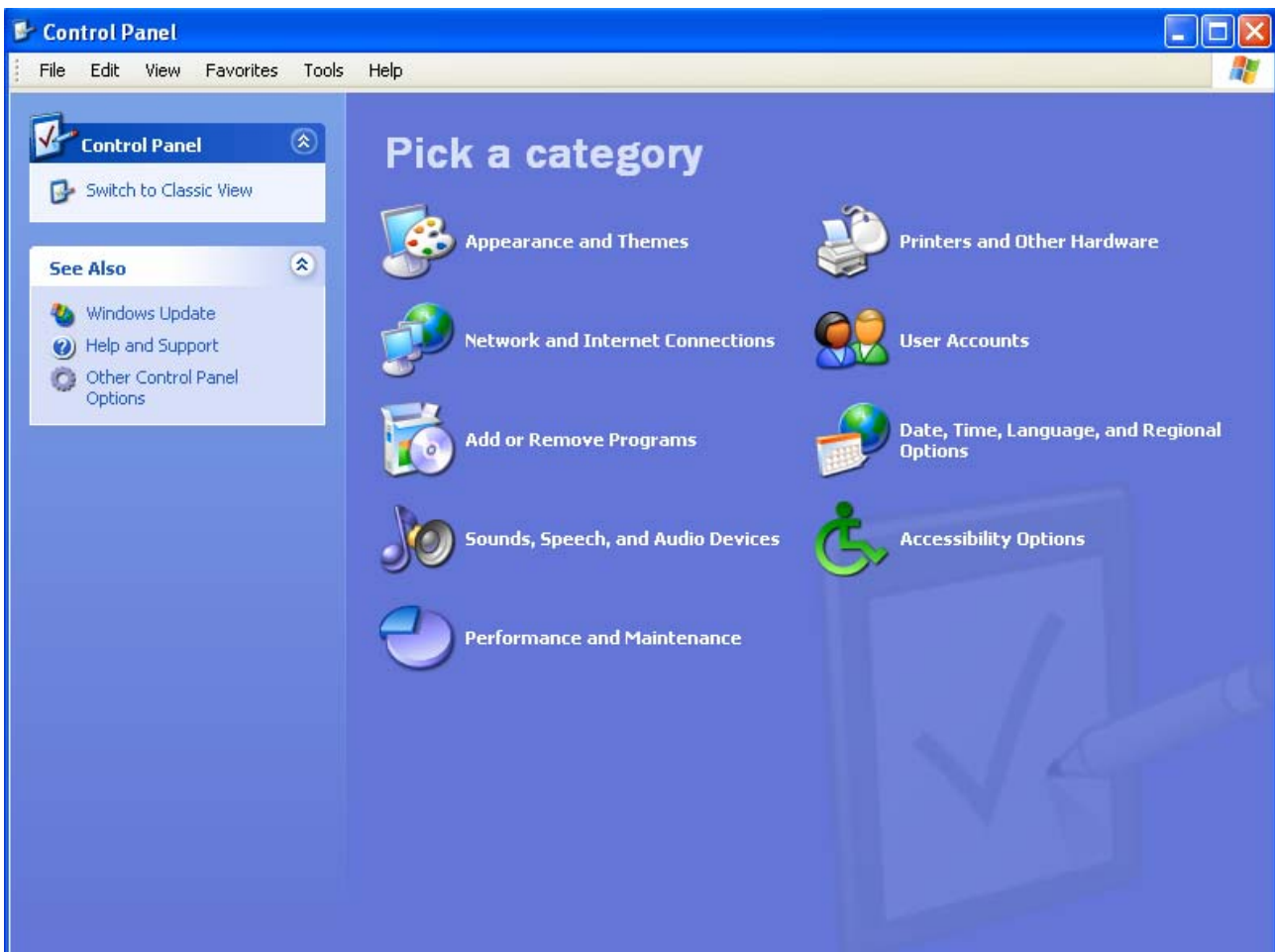
Vi anbefaler at du fx opretter en Teledanmark Netbasis konto ([http://privat.tdc.dk/artikel.php?dogtag=tdc\\_p\\_int\\_modem\\_basis](http://privat.tdc.dk/artikel.php?dogtag=tdc_p_int_modem_basis)) som er gratis.

CSC har oprettet en test-konto som du indledningsvist kan forsøge dig med som erstatning for din CSC DialIP-konto.

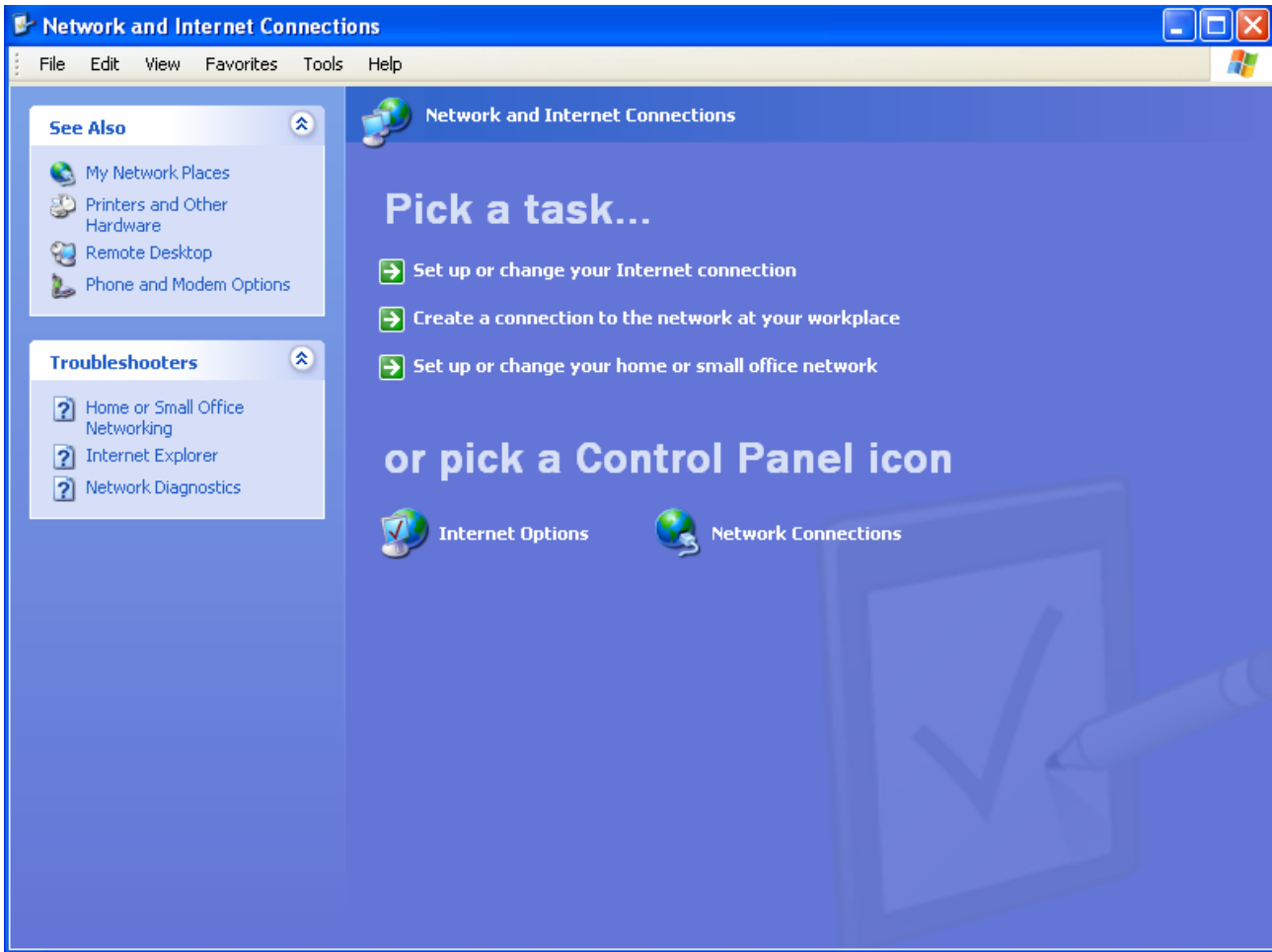
Nedenfor gennemgås det, hvordan du sætter din PC op til at tilgå Internet med Netbasis. I gennemgangen anvendes Microsofts Windows XP.

## Opkaldsprofil til Internet med TDC Netbasis

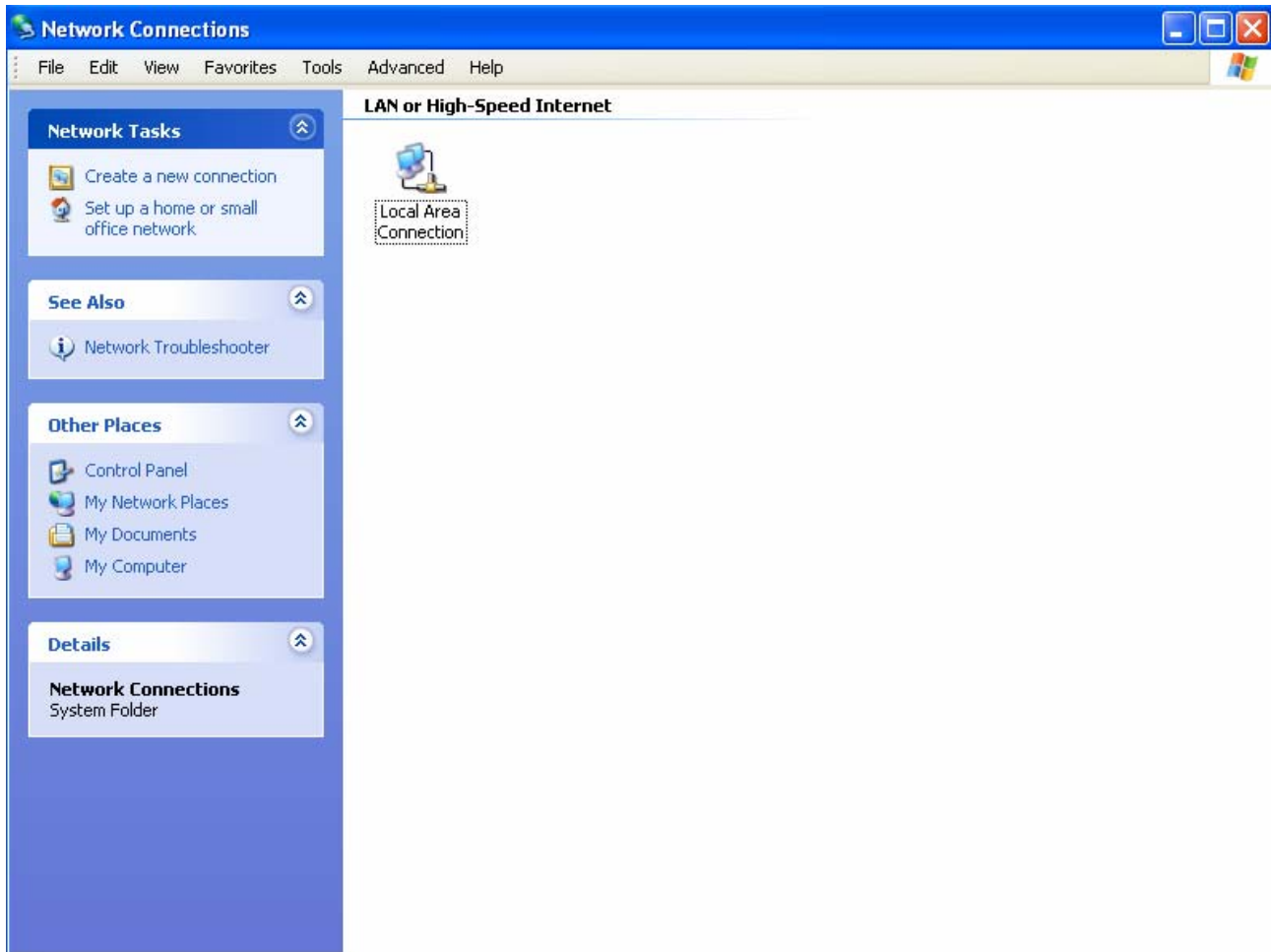
- Klik på **Start**
- Klik på **Control Panel**



- Klik på **Network and Internet Connections**



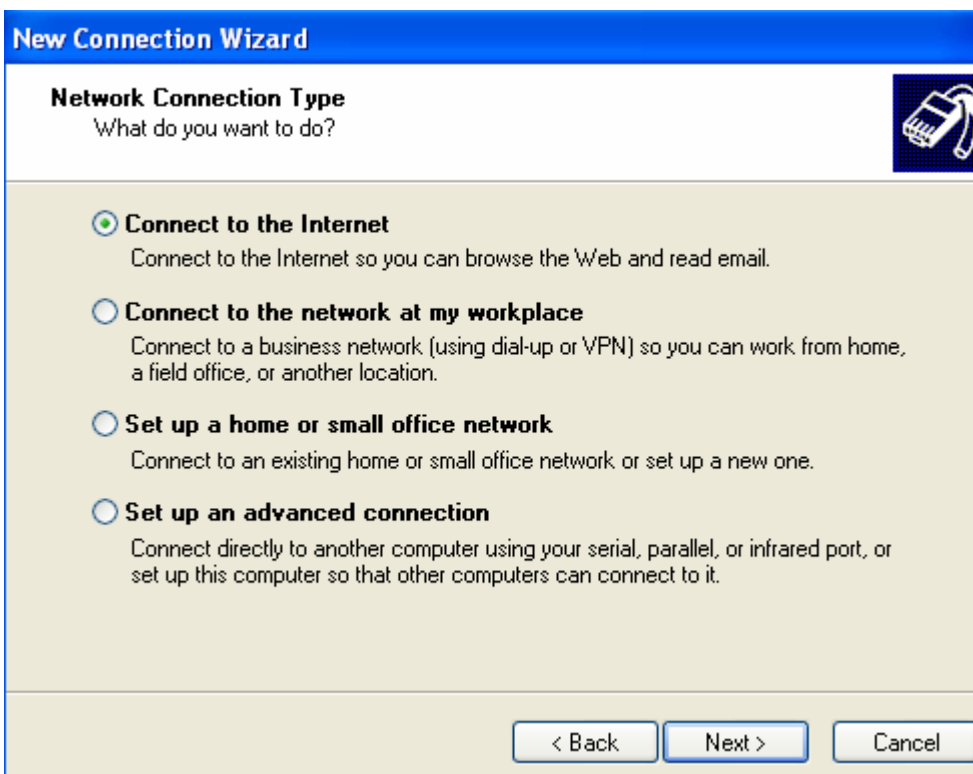
- Klik på **Network Connections**



- Under **Network Tasks** vælges **Create a new connection**

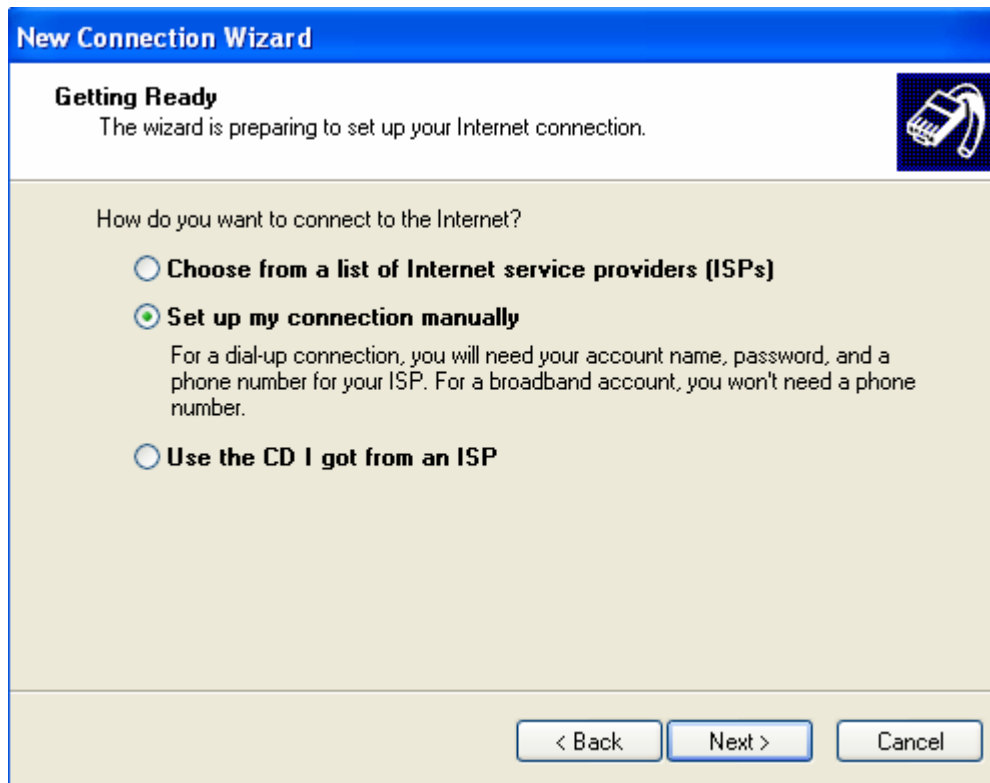


- Klik på **Next>**



- Vælg **Connect to the Internet**


- Klik på **Next>**



- Vælg **Set up my connection manually**
- Klik på **Next>**

**New Connection Wizard**

**Internet Connection**  
How do you want to connect to the Internet?



**Connect using a dial-up modem**  
 This type of connection uses a modem and a regular or ISDN phone line.


**Connect using a broadband connection that requires a user name and password**  
 This is a high-speed connection using either a DSL or cable modem. Your ISP may refer to this type of connection as PPPoE.

**Connect using a broadband connection that is always on**  
 This is a high-speed connection using either a cable modem, DSL or LAN connection. It is always active, and doesn't require you to sign in.

- Vælg **Connect using a dial-up modem**
- Klik på **Next>**

**New Connection Wizard**

**Connection Name**  
What is the name of the service that provides your Internet connection?



Type the name of your ISP in the following box.


ISP Name

The name you type here will be the name of the connection you are creating.

- Angiv et navn på den opkaldsprofil du er ved at lave i feltet under ISP Name. I eksemplet kaldes den TDC
- Klik på **Next>**

**New Connection Wizard**

**Phone Number to Dial**  
What is your ISP's phone number?



Type the phone number below.

Phone number:

You might need to include a "1" or the area code, or both. If you are not sure you need the extra numbers, dial the phone number on your telephone. If you hear a modem sound, the number dialed is correct.

< Back   Next >   Cancel

- Tilføj telefonnummeret for Netbasis under **Phone number**
- Klik på **Next>**

## New Connection Wizard

### Internet Account Information

You will need an account name and password to sign in to your Internet account.



Type an ISP account name and password, then write down this information and store it in a safe place. (If you have forgotten an existing account name or password, contact your ISP.)

User name:

Password:

Confirm password:

- Use this account name and password when anyone connects to the Internet from this computer
- Make this the default Internet connection
- Turn on Internet Connection Firewall for this connection

< Back

Next >

Cancel

- Tilføj dit TDC kundenummer ud for **User Name**, i dette tilfælde 120103169040
- Tilføj dit kodeord ud for Password, i dette tilfælde 10gerkoed.
- Klik på **Next>**

## New Connection Wizard



### Completing the New Connection Wizard

You have successfully completed the steps needed to create the following connection:

#### TDC

- Make this the default connection
- This connection is firewalled
- Share with all users of this computer
- Use the same user name & password for everyone

The connection will be saved in the Network Connections folder.

Add a shortcut to this connection to my desktop

To create the connection and close this wizard, click Finish.

< Back

Finish

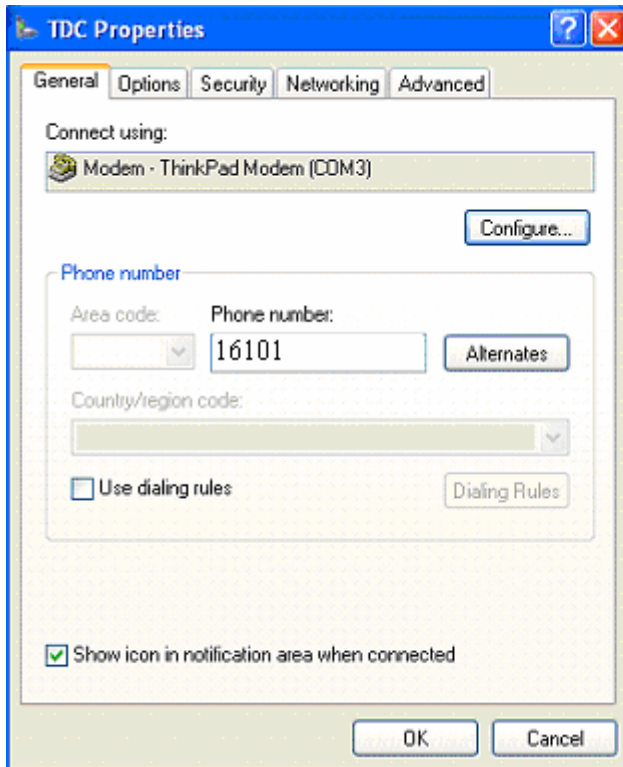
Cancel

- Klik på **Finish**

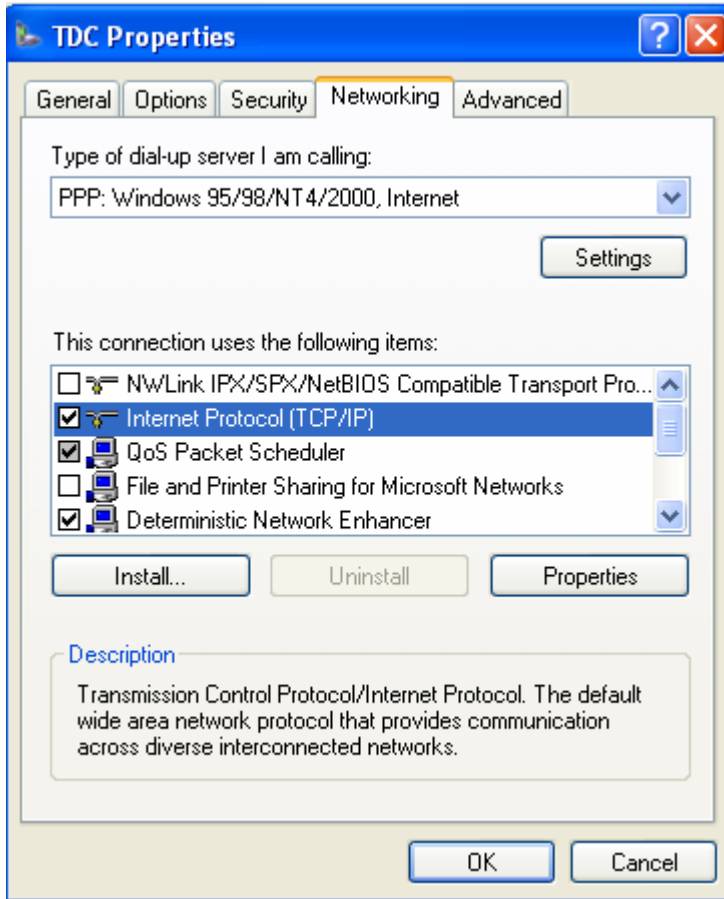
Din opkaldsprofil er nu færdig og skal tilpasses.



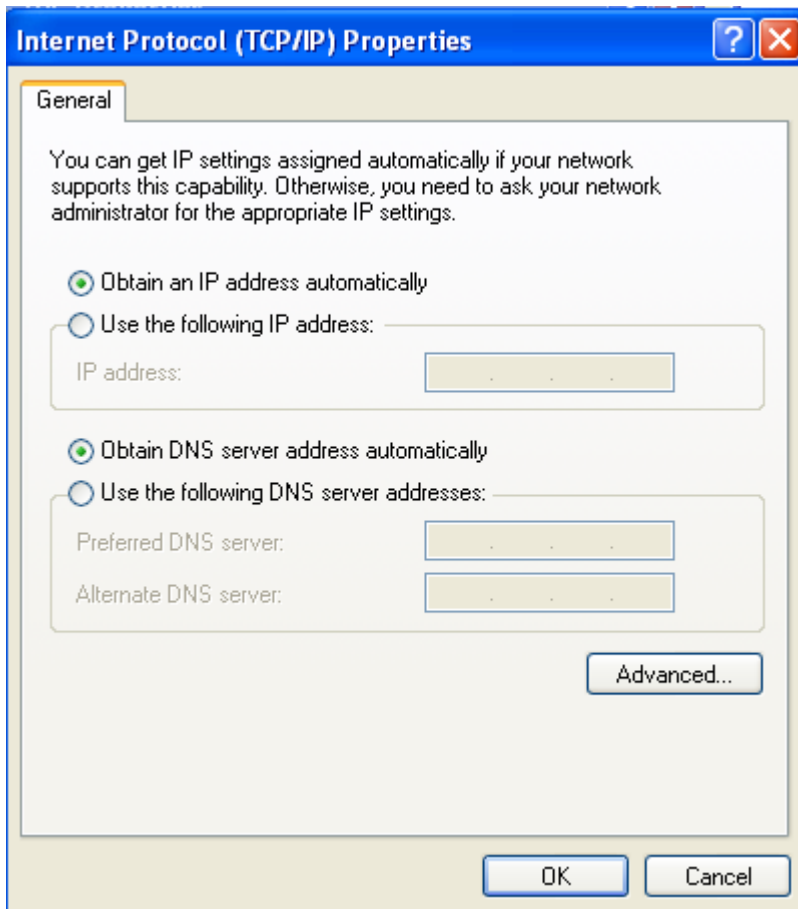
- Sæt evt. et flueben i **Save this user name and password for the following users**
- Klik på **Properties**



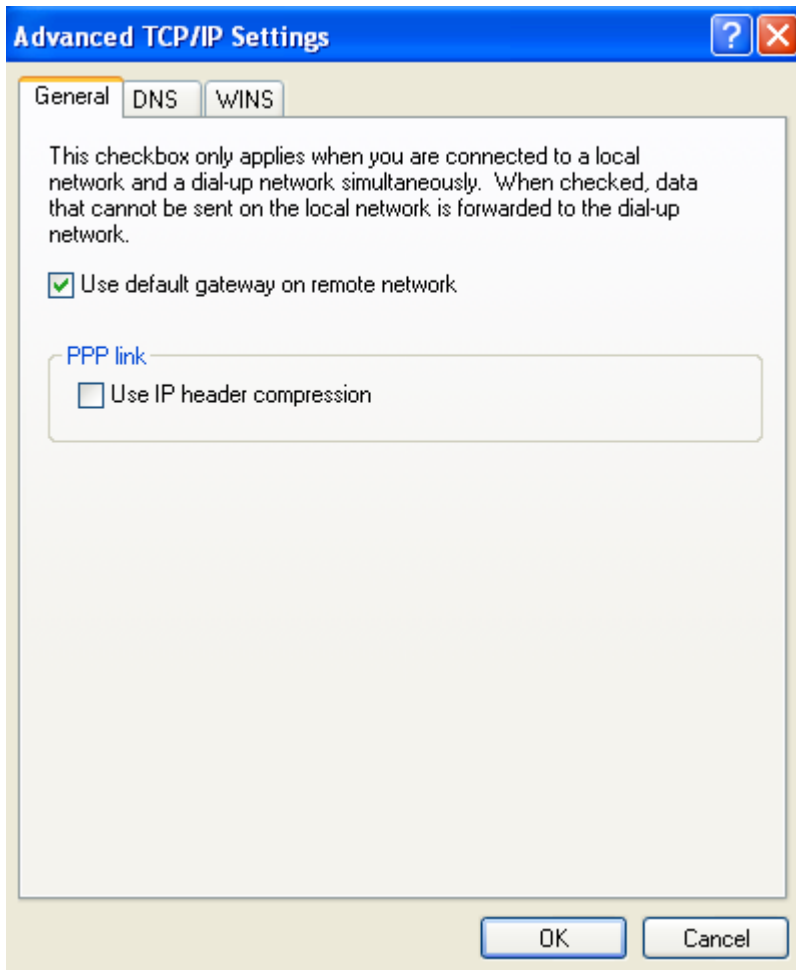
- Har du mere end et modem, vælger du et modem du vil bruge fra listen under **Connect using:** I eksemplet er der kun et modem tilsluttet COM3.
- Klik på fanebladet **Networking**



- Vælg **Internet Protocol (TCP/IP)** og klik på **Properties**.



- Skærbilledet skal se ud som ovenfor, dvs. valg af **Obtain an IP address automatically** og **Obtain DNS server address automatically**
- Klik på **Advanced**



- Fravælg **Use IP header compression** ved at fjerne fluebenet.
- Klik på **OK**

Din dial-up konto er nu klar til brug, og følgende skærbillede kommer frem igen:



Connect TDC

User name: 120103169040

Password: [To change the saved password, click here]

Save this user name and password for the following users:

Me only

Anyone who uses this computer

Dial: 16101

Dial Cancel Properties Help

- Klik på **Dial**, og du kommer på Internet